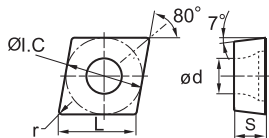
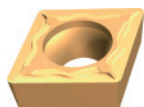


CC□□

F1



型号 Type	尺寸 Dimensions(mm)					涂层硬质合金 Coated cemented carbide										金陶 Cemet	硬质合金 Cemented carbide							
	L	ØI.C	S	ød	r	KBC710	KBC715	KBC720	KBC725	KBC730	KBG202	KBM710	KBM720	KBD110	KBD102	KBD120	KBD125	KLT530	KLT530C	KLT310	KLT340	KLT051	KLT110	KLT120
CCMT060202-F1	6.4	6.35	2.38	2.8	0.2	●		●	★		●						○							○
CCMT060204-F1	6.4	6.35	2.38	2.8	0.4	●	★	●	○	○	○					○	●							●
CCMT060208-F1	6.4	6.35	2.38	2.8	0.8	●	★	●		○	●		○				●							
CCMT09T302-F1	9.7	9.525	3.97	4.4	0.2			●	○		●						●							○
CCMT09T304-F1	9.7	9.525	3.97	4.4	0.4	●	★	●	★	○	○	○		●		○	●	○						○
CCMT09T308-F1	9.7	9.525	3.97	4.4	0.8	●	★	●	○	○	●	○	○	○		○	●							○
CCMT120404-F1	12.9	12.7	4.76	5.56	0.4	●	○	●	○		●					●	○		○					
CCMT120408-F1	12.9	12.7	4.76	5.56	0.8	○																		

★ Recommended grade

● Available grade

○ Make-to-order



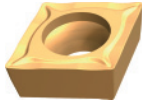
03680 м. Київ, Машинобудівна 46  
 тел.: +38 044 227-57-73  
 ф/авт.: +38 044 379-15-33  
[www.fractalmost.com.ua](http://www.fractalmost.com.ua)

Applicable tool

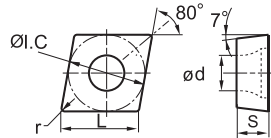
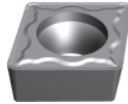


CC□□

F2



BM



Type	Dimensions(mm)					Coated cemented carbide										Cemented carbide									
	L	ØI.C	S	ød	r	KBC710	KBC715	KBC720	KBC725	KBC730	KBG130	KBG202	KBG131	KBM710	KBM720	KBM253	KBD102	KBD120	KBD125	KLT310	KLT340	KLT051	KLT110	KLT120	
CCMT060204-F2	6.4	6.35	2.38	2.8	0.4	●	★	●	★	○		●		○	●		●	●	●						●
CCMT060208-F2	6.4	6.35	2.38	2.8	0.8	●		●	○			●		○	○		○		●						
CCMT09T304-F2	9.7	9.525	3.97	4.4	0.4	●	★	●	★	●		●		○	●		●	●	○						
CCMT09T308-F2	9.7	9.525	3.97	4.4	0.8	●	★	●	★	●		●		●	●		●	●	●						
CCMT120404-F2	12.9	12.7	4.76	5.56	0.4	●	○	●	○	○				○	○		○		○						
CCMT120408-F2	12.9	12.7	4.76	5.56	0.8	●	★	●	★	●		○		○	●		●		●						
CCMT120412-F2	12.9	12.7	4.76	5.56	1.2		○	○									○								
CCMT060204-BM	6.4	6.35	2.38	2.8	0.4							●	★			★									
CCMT060208-BM	6.4	6.35	2.38	2.8	0.8							●	★			★									
CCMT09T304-BM	9.7	9.525	3.97	4.4	0.4							●	★			★									
CCMT09T308-BM	9.7	9.525	3.97	4.4	0.8							●	★			★									
CCMT120404-BM	12.9	12.7	4.76	5.56	0.4							●	★			★									
CCMT120408-BM	12.9	12.7	4.76	5.56	0.8							●	★			★									
CCMT120412-BM	12.9	12.7	4.76	5.56	1.2							●	★			★									

★ Recommended grade

● Available grade

○ Make to order



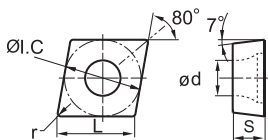
03680 м. Київ, Машинобудівна 46  
 тел.: +38 044 227-57-73  
 ф/авт.: +38 044 379-15-33  
[www.fractalmost.com.ua](http://www.fractalmost.com.ua)

Applicable tool



CC□□

F3



Type	Dimensions(mm)					Coated cemented carbide										Cemented carbide									
	L	ØI.C	S	ød	r	KBC710	KBC715	KBC720	KBC725	KBC730	KBG130	KBG202	KBM720	KBM253	KBD110	KBD102	KBD120	KBD125	KBD130	KLT310	KLT340	KLT051	KLT110	KLT120	
CCMT060204-F3	6.4	6.35	2.38	2.8	0.4	○	○	●	○	○	○														
CCMT060208-F3	6.4	6.35	2.38	2.8	0.8	●	○	●		●		●					●	●							
CCMT09T304-F3	9.7	9.525	3.97	4.4	0.4			●		○															
CCMT09T308-F3	9.7	9.525	3.97	4.4	0.8	●	★	●	★	●		●		●	●	●	●	●			○		●		
CCMT120408-F3	12.9	12.7	4.76	5.56	0.8	●	★	●		●		○	●		●	●	●	●			○		●	●	
CCMT120412-F3	12.9	12.7	4.76	5.56	1.2	○	○	●		●		○				●	○								
CCMW060204	6.4	6.35	2.38	2.8	0.4												○			○			●		
CCMW09T304	9.7	9.525	3.97	4.4	0.4												○			○			●	●	
CCMW09T308	9.7	9.525	3.97	4.4	0.8	○											○					○	○		
CCMW120404	12.9	12.7	4.76	5.56	0.4																			●	
CCMW120408	12.9	12.7	4.76	5.56	0.8												○						●	○	

★ Recommended grade

● Available grade

○ Make-to-order



03680 м. Київ, Машинобудівна 46  
 тел.: +38 044 227-57-73  
 ф/авт.: +38 044 379-15-33  
[www.fractalmost.com.ua](http://www.fractalmost.com.ua)

Applicable tool

