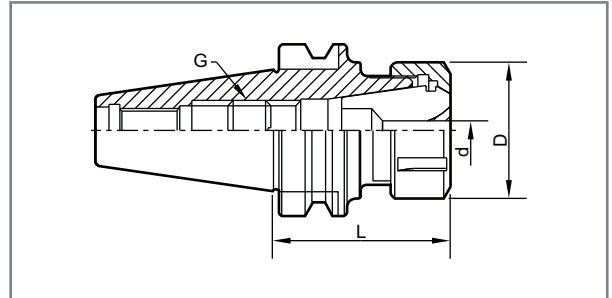


ER Spring Collet Chuck

Features:

- The most popular collet chucks. One chuck can be used for end mills, drills, reamers and taps.
- Thread of the spring collet chuck and internal taper are precision ground. Thread of clamping nut is hardened and turned for achieving high clamping power.
- Backup screw is not included, please order as optional item.
- Chuck body is pre-balanced G6.3/8000 r.p.m. (standard grade)



- Higher pre-balanced grade is available on request, the additional charge is needed.

| Optional Pre. balanced | |
|------------------------|--------------|
| G2.5 | 18000 r.p.m. |
| G2.5 | 25000 r.p.m. |



| Taper Shank | Ordering Code | Type of Holder | L | D | d | Backup Screw G |
|-------------|---------------|----------------|-----|------|---------|----------------|
| BT30 | 330100-302 | BT30-ER16-70 | 70 | 28 | 0.5-10 | M10x1.5 |
| | -402 | -ER20-70 | 70 | 34 | 1-13 | M12x1.75 |
| | -602 | -ER32-60 | 60 | 50 | 2-20 | M12x1.75 |
| | -702 | -ER40-80 | 80 | 63 | 3-26 | M12x1.75 |
| BT40 | 340100-302 | BT40-ER16-70 | 70 | 28 | 0.5-10 | M10x1.5 |
| | -304 | -ER16-100 | 100 | | | |
| | -402 | -ER20-70 | 70 | 34 | 1-13 | M14x2.0 |
| | -404 | -ER20-100 | 100 | | | |
| | -501 | -ER25-70 | 70 | 42 | 1-16 | M12x1.75 |
| | -504 | -ER25-100 | 100 | | | |
| | -506 | -ER25-150 | 150 | 50 | 2-20 | M16x2.0 |
| | -602 | -ER32-70 | 70 | | | |
| -604 | -ER32-100 | 100 | 63 | 3-26 | M16x2.0 | |
| -702 | -ER40-80 | 80 | | | | |
| BT50 | 350100-302 | BT50-ER16-100 | 100 | 28 | 0.5-10 | M10x1.5 |
| | -304 | -ER16-150 | 150 | | | |
| | -402 | -ER20-100 | 100 | 34 | 1-13 | M12x1.75 |
| | -404 | -ER20-150 | 150 | | | |
| | -502 | -ER25-100 | 100 | 42 | 1-16 | M16x2.0 |
| | -504 | -ER25-150 | 150 | | | |
| | -602 | -ER32-100 | 100 | 50 | 2-20 | M20x2.5 |
| | -604 | -ER32-150 | 150 | | | |
| | -606 | -ER32-200 | 200 | 63 | 3-26 | M20x2.5 |
| | -702 | -ER40-80 | 80 | | | |
| | -704 | -ER40-100 | 100 | 63 | 3-26 | M20x2.5 |
| | -706 | -ER40-150 | 150 | | | |
| -708 | -ER40-200 | 200 | | | | |